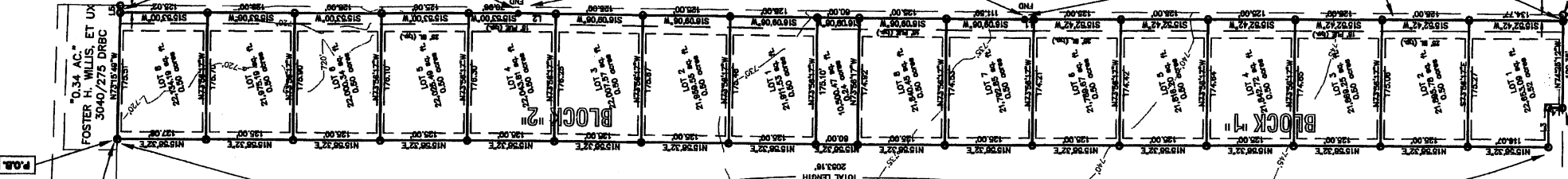


FINAL PLAT OF KING'S MILL SUBDIVISION BELL COUNTY, TEXAS

WILLIAM ALLEN SURVEY, A-24

"70.00 ACRES"
GMD-DENHAM PARTNERS, LP
TO
DAVID L. KING, et ux MICHELE D. KING
10-B-2006 BOC, 2006-00048890
VOLUME 6225, PAGE 201, RPRBC



P.O.B.

"0.34 AC."
FOSTER H. WILLIS, ET UX
3040/275 DRBC

"0.456 AC."
DONNA C.W. DANEKAS
4248/7 DRBC

"0.947 AC."
FOSTER H. WILLIS, ET UX
4248/5 DRBC

P.O.C.
NORTHWEST
CORNER
"183.587 ACRES"



1168.25' AT
3168.47' AT
2194.12' AT
FENCE CORNER

RICHARD WINN
4852/609

RIGHT-OF-WAY EASEMENT TO BE DEDICATED
TO BELL COUNTY IN TANDUM WITH
THE RECORDED PLAT
0.74 ACRES AS MONUMENTED BY BELL COUNTY
JUNE, 2007

TOTAL ACRES
362,058.23 sq. ft.
8.311 acres

18.8M
600 NAIL SET IN
FENCE CORNER POST
EL.=749.91

FOUND COTTON
SPINDLE IN STUMP

570.98'

BREWSTER ROAD (50' R.O.W.)

EXISTING FENCE LINE

773.18'

183.74'

TOTAL LENGTH
2003.16'

3646.12'